

# "ROSE LAKE FOREST SHORES SUBDIVISION"

PART OF THE NW 1/4 OF SECTION 9, T 19N - R 9W,

ROSE LAKE TOWNSHIP, OSCEOLA CO, MICHIGAN

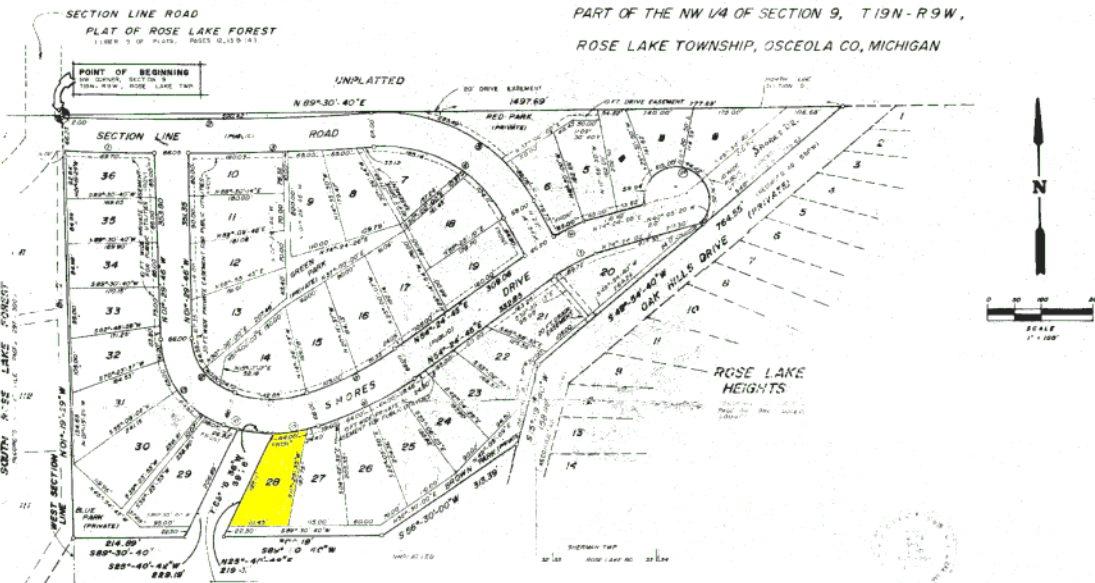


TABLE  
OF  
AREAS  
AND  
PERIMETERS  
GIVEN DATA

No.	Section	Area	Perimeter
1	4619.59	174.72	81
2	4353.54	590.42	291
3	4619.59	353.15	174
4	263.53	299.52	148
5	329.53	376.94	214
6	400.00	60.00	31
7	374.00	89.72	41
8	600.00	106.53	54
9	666.00	297.96	104
10	280.22	26.93	11
11	222.22	142.85	71
12	114.90	176.27	71
13	180.90	239.27	121
14	88.19	241.58	-
15	209.27	144.40	41

Prepared for: [www.NWMichiganLand.com](http://www.NWMichiganLand.com)  
 By: Gregory Wood  
 Email: [greg@nwmichiganland.com](mailto:greg@nwmichiganland.com)  
 Phone: 931-999-1010

