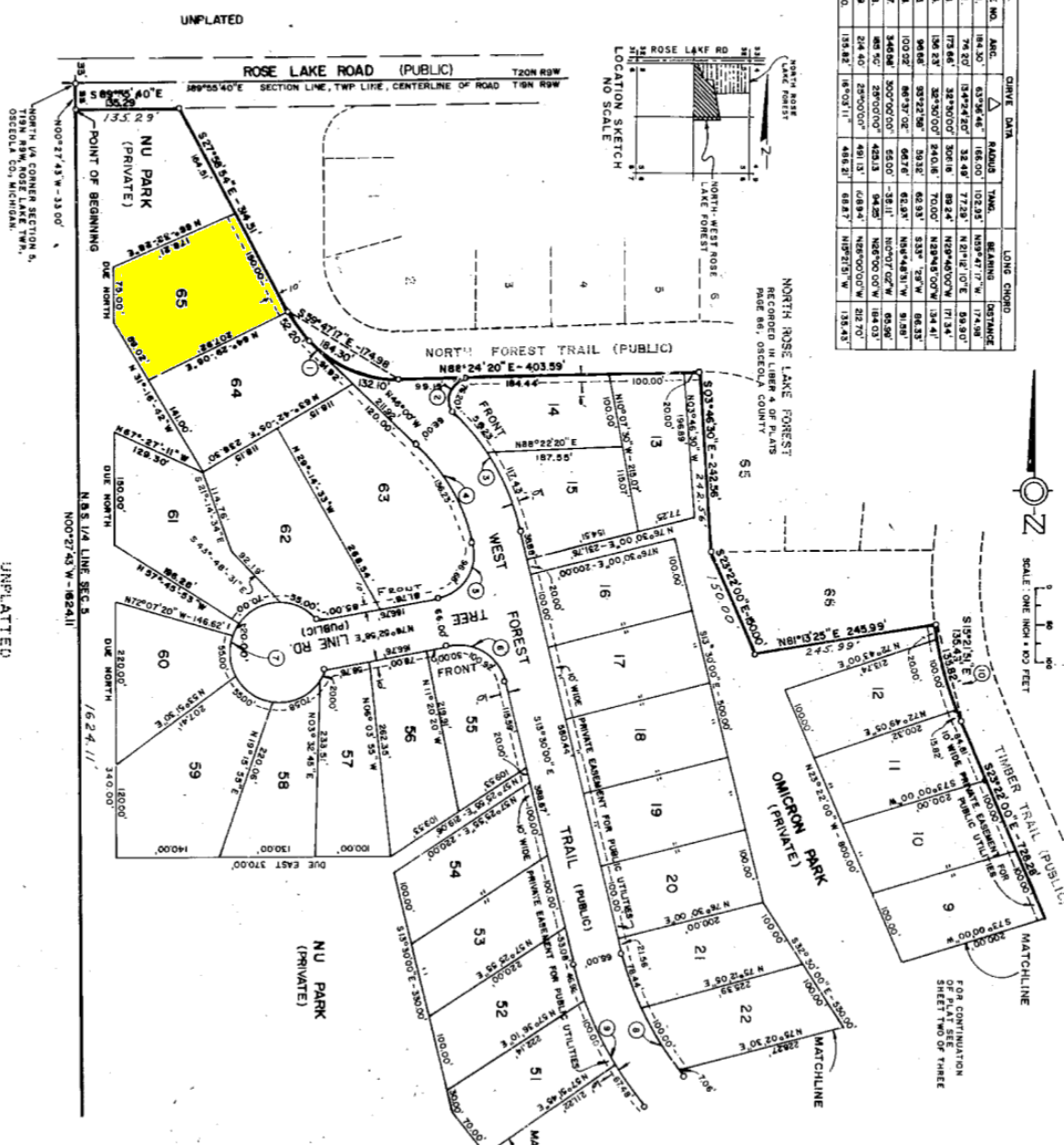
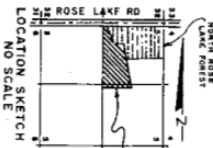


PLAT OF NORTHWEST ROSE LAKE FOREST
 PART OF THE EAST 1/2 OF SECTION 5, T19N, R9W,
 ROSE LAKE TWP, OSCOLA CO., MICHIGAN.

CHANG. NO.	DATE	REASON	LONG CHORD	DISTANCE
1.	1943.00	63°36'46"	186.00	102.35
2.	1943.00	137°24'20"	32.49	77.25
3.	1943.00	32°30'00"	309.18	892.4
4.	1943.00	28°30'00"	240.18	700.0
5.	1943.00	35°22'58"	293.2	62.35
6.	1943.00	86°37'02"	60.78	134.41
7.	1943.00	300°00'00"	450.00	135.11
8.	1943.00	25°00'00"	491.13	148.25
9.	1943.00	25°00'00"	491.13	148.25
10.	1943.00	16°02'11"	488.21	148.25



SCALE: ONE INCH = 400 FEET

FOR CONTINUATION SHEET TWO OF THREE

MATCHLINE

PLAT LEGEND

All dimensions are shown in feet.

All curvilinear dimensions are shown along the arc.

All lot corners are iron rods, 18" in length and weighing not less than 0.6 pounds per lineal foot.

Concrete monuments have been placed at all points marked thus "C".

The bearings of this plat were established in relation to true meridian by celestial observation of Polaris on 1-15-1971.

This plat is subject to restrictions as required by Act 288 of 1967, as amended on certain lots with respect to the requirements of the Michigan Department of Natural Resources and/or the Michigan Department of Public Health, which are recorded in liber 310, Page 486 of records of this county.

54100

SHEET ONE OF THREE