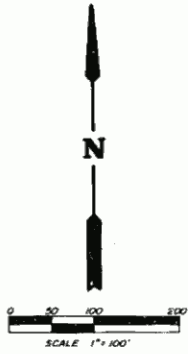


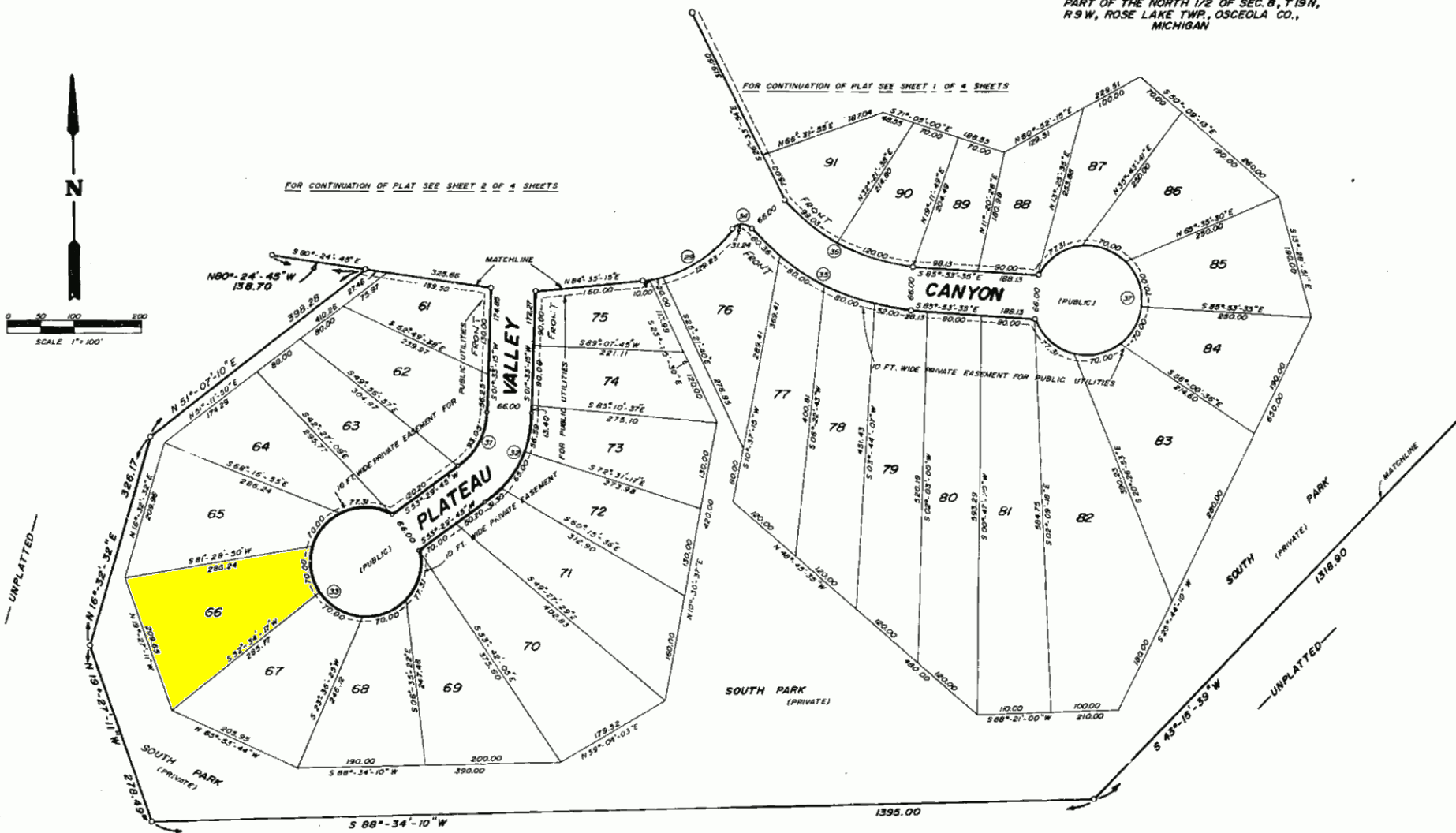
SOUTH ROSE LAKE FOREST

PART OF THE NORTH 1/2 OF SEC. 8, T.19 N,
R.9 W, ROSE LAKE TWP., OSCEOLA CO.,
MICHIGAN



FOR CONTINUATION OF PLAT SEE SHEET 2 OF 4 SHEETS

FOR CONTINUATION OF PLAT SEE SHEET 1 OF 4 SHEETS



LEGEND

All dimensions are in feet.
All curvilinear dimensions are shown along the arc.

All lot corners are iron rods 18" inches in length and weighing no less than 0.6 lbs. per lineal foot.

Concrete monuments have been placed at all points marked "o".

The bearings of this plat were established from the recorded plat of Rose Lake Forest, Liber 5 of plats on Pages 12, 13 & 14.

CURVE DATA

Red.	Con.	Angle	Arc.	Tan.	L.C.	L.C. Bearing
29	180.51	50°-43'-53"	159.83	85.58	154.66	N 59°-14'-22" E
31	102.64	51°-56'-50"	93.05	50.01	89.90	N 27°-31'-40" E
32	168.64	51°-56'-50"	152.89	82.15	147.71	N 27°-31'-40" E
33	80.00	311°-16'-25"	434.62	-----	66.00	N 36°-30'-11" W
34	16.80	106°-32'-03"	31.24	22.51	26.93	N 87°-07'-33" E
35	337.11	46°-17'-25"	272.36	144.10	265.01	N 62°-44'-15" W
36	271.11	44°-10'-25"	209.02	110.01	203.88	N 63°-48'-25" E
37	80.00	311°-16'-25"	434.62	-----	66.00	N 04°-06'-25" E

