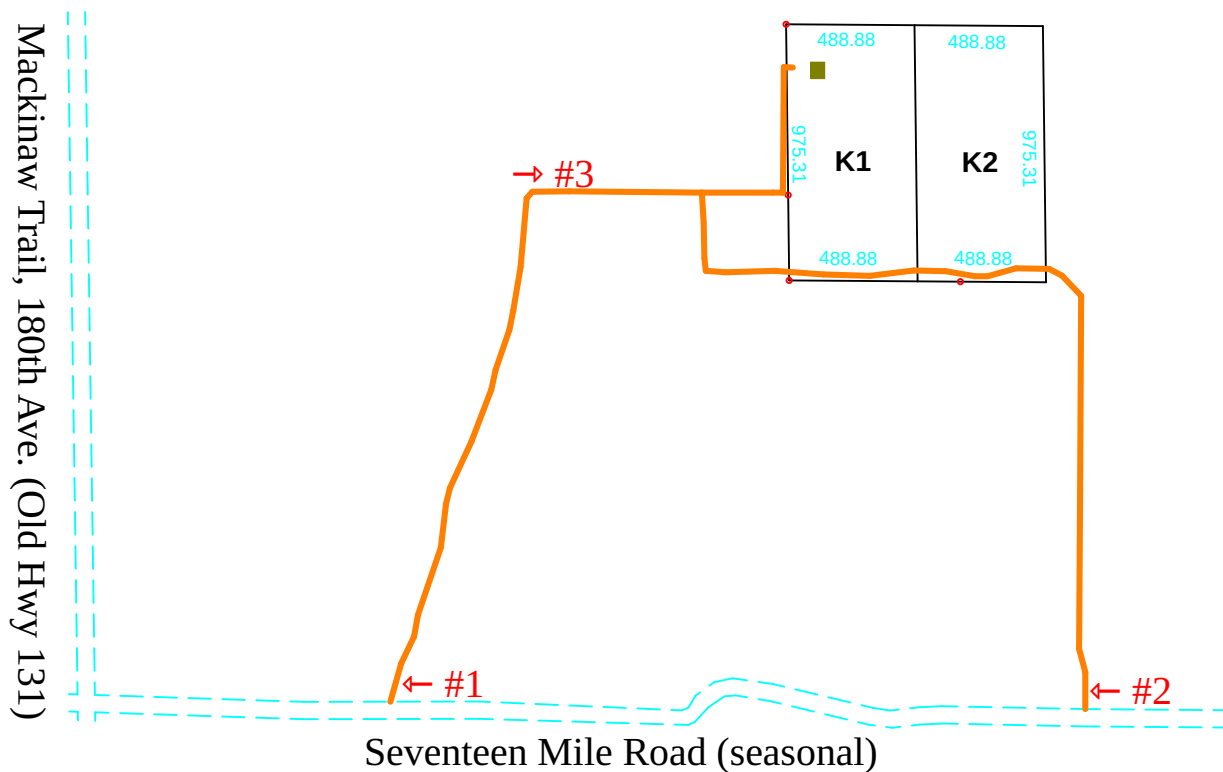


Section 6, T19N-R9W, Rose Lake Twp. Osceola County, Michigan.

Part of the NW/4 SE/4

Parcel K1, 11.25 ac +/- with Rustic Cabin

Parcel K2, 11.25 ac +/- with Hunting Tree Blind



- Property Boundaries
- Deeded Easement
- Hunting Cabin
- Survey Monuments
- ← Way Sign

GPS Coordinates:

Way Sign #1: 44.059733, -85.439467
 Way Sign #2: 44.059616, -85.429175
 Way Sign #3: 44.065043, -85.437293
 K1 - Sign: 44.065050, -85.433583
 K2 - Sign: 44.064217, -85.429883
 K1, NW corner: 44.066900, -85.433550
 K1, SW corner: 44.064050, -85.433517
 K1/K2 S corner: 44.064050, -85.431800
 K2, SE corner: 44.064050, -85.429917
 K2, NE corner: 44.066667, -85.429917
 K1/K2 N corner: 44.066767, -85.431767

Prepared for: www.nwmichiganland.com
 By: Gregory Wood
 Email: greg@nwmichiganland.com
 Phone: 931-452-4511 or 931-638-4182 (cell)
 Effective date: 09/12/2017

Dimensions are approximate

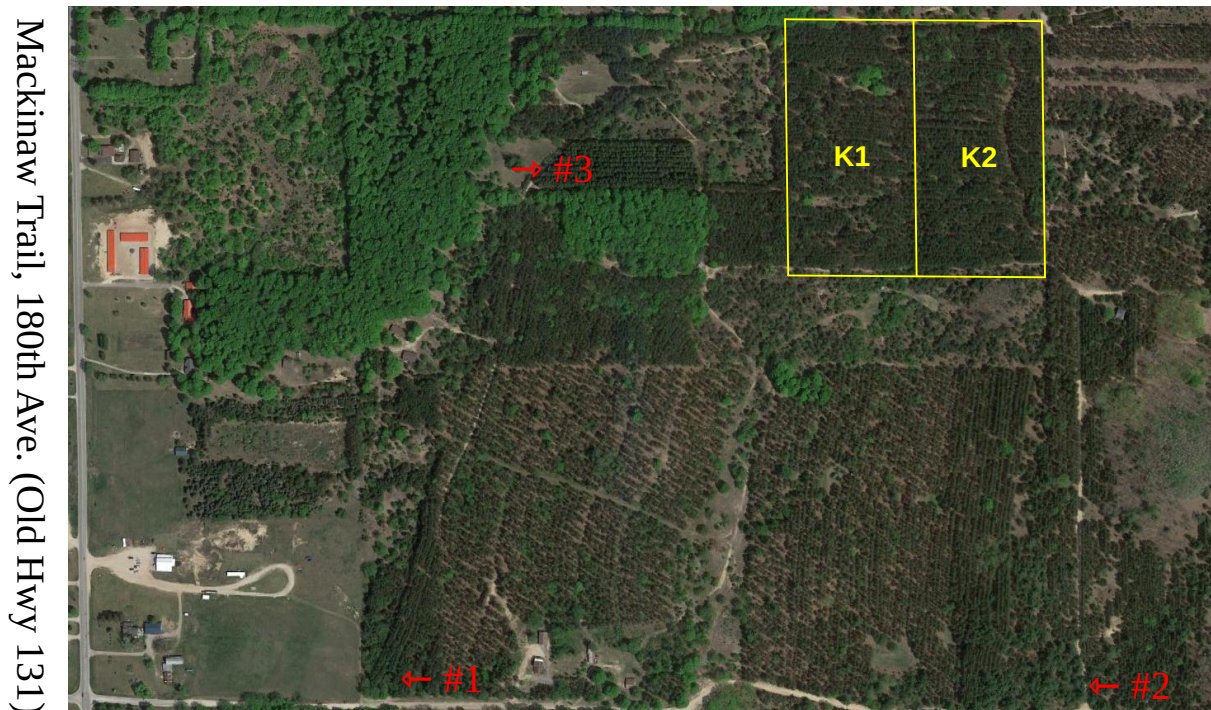


Section 6, T19N-R9W, Rose Lake Twp. Osceola County, Michigan.

Part of the NW/4 SE/4

Parcel K1, 11.25 ac +/- with Rustic Cabin

Parcel K2, 11.25 ac +/- with Hunting Tree Blind



Seventeen Mile Road (seasonal)

□ Property Boundaries

← Way Sign

GPS Coordinates:

Way Sign #1: 44.059733, -85.439467

Way Sign #2: 44.059616, -85.429175

Way Sign #3: 44.065043, -85.437293

K1 - Sign: 44.065050, -85.433583

K2 - Sign: 44.064217, -85.429883

K1, NW corner: 44.066900, -85.433550

K1, SW corner: 44.064050, -85.433517

K1/K2 S corner: 44.064050, -85.431800

K2, SE corner: 44.064050, -85.429917

K2, NE corner: 44.066667, -85.429917

K1/K2 N corner: 44.066767, -85.431767

Prepared for: www.nwmichiganland.com
By: Gregory Wood
Email: greg@nwmichiganland.com
Phone: 931-452-4511 or 931-638-4182 (cell)
Effective date: 09/12/2017

Dimensions are approximate

