

"ROSE LAKE FOREST SHORES SUBDIVISION"

PART OF THE NW 1/4 OF SECTION 9, T19N-R9W,

ROSE LAKE TOWNSHIP, OSCEOLA CO, MICHIGAN

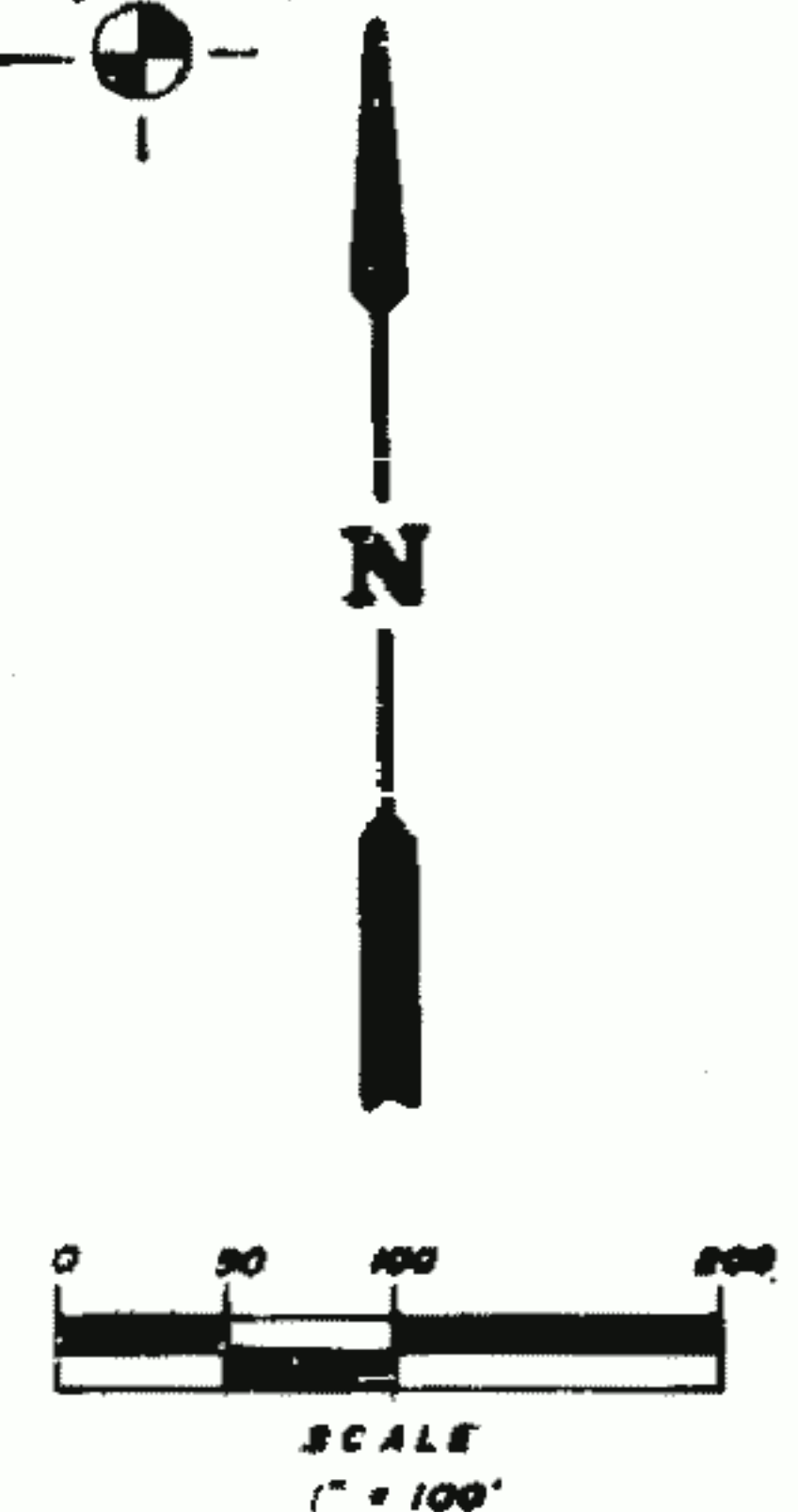
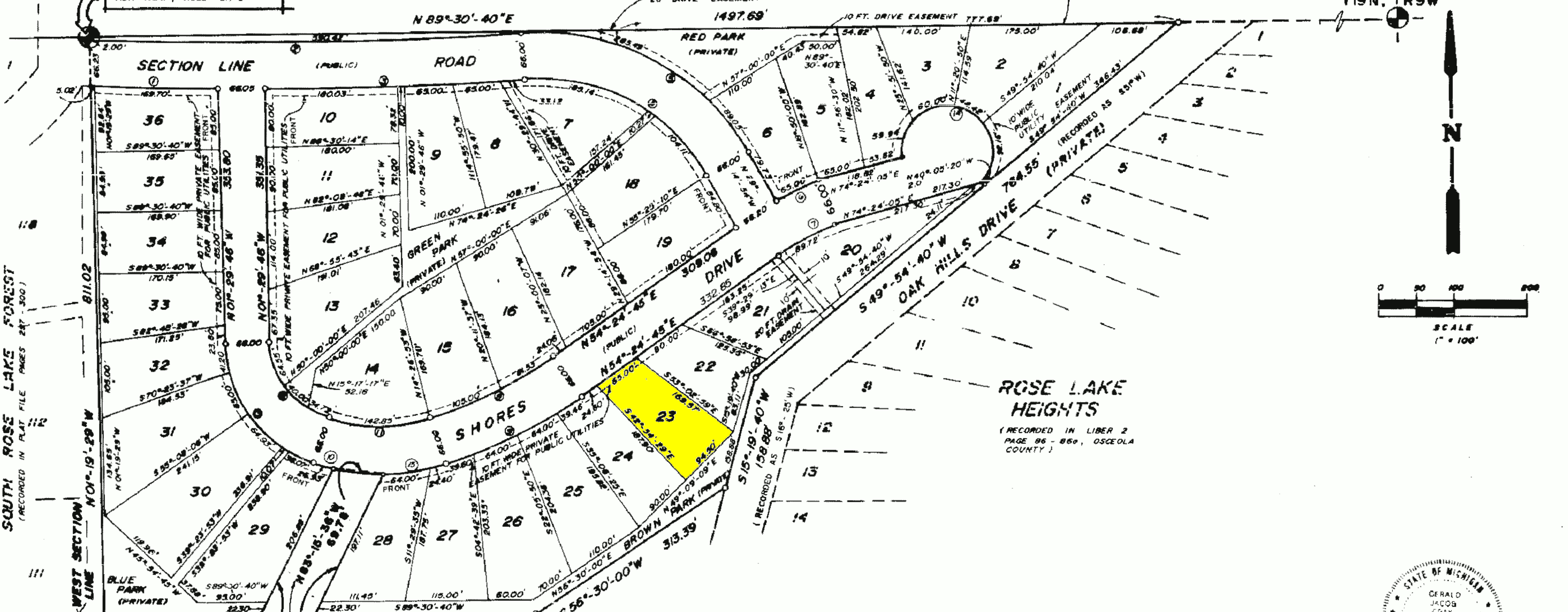
SECTION LINE ROAD
PLAT OF ROSE LAKE FOREST
(LIBER 5 OF PLATS, PAGES 12, 13 & 14)

POINT OF BEGINNING
NW CORNER, SECTION 9
T19N-R9W, ROSE LAKE TWP.

UNPLATTED

NORTH LINE SECTION 9

N.E. Cor. Sec. 9
T19N, R9W



SOUTH ROSE LAKE FOREST
(RECORDED IN PLAT FILE PAGES 247, 300)

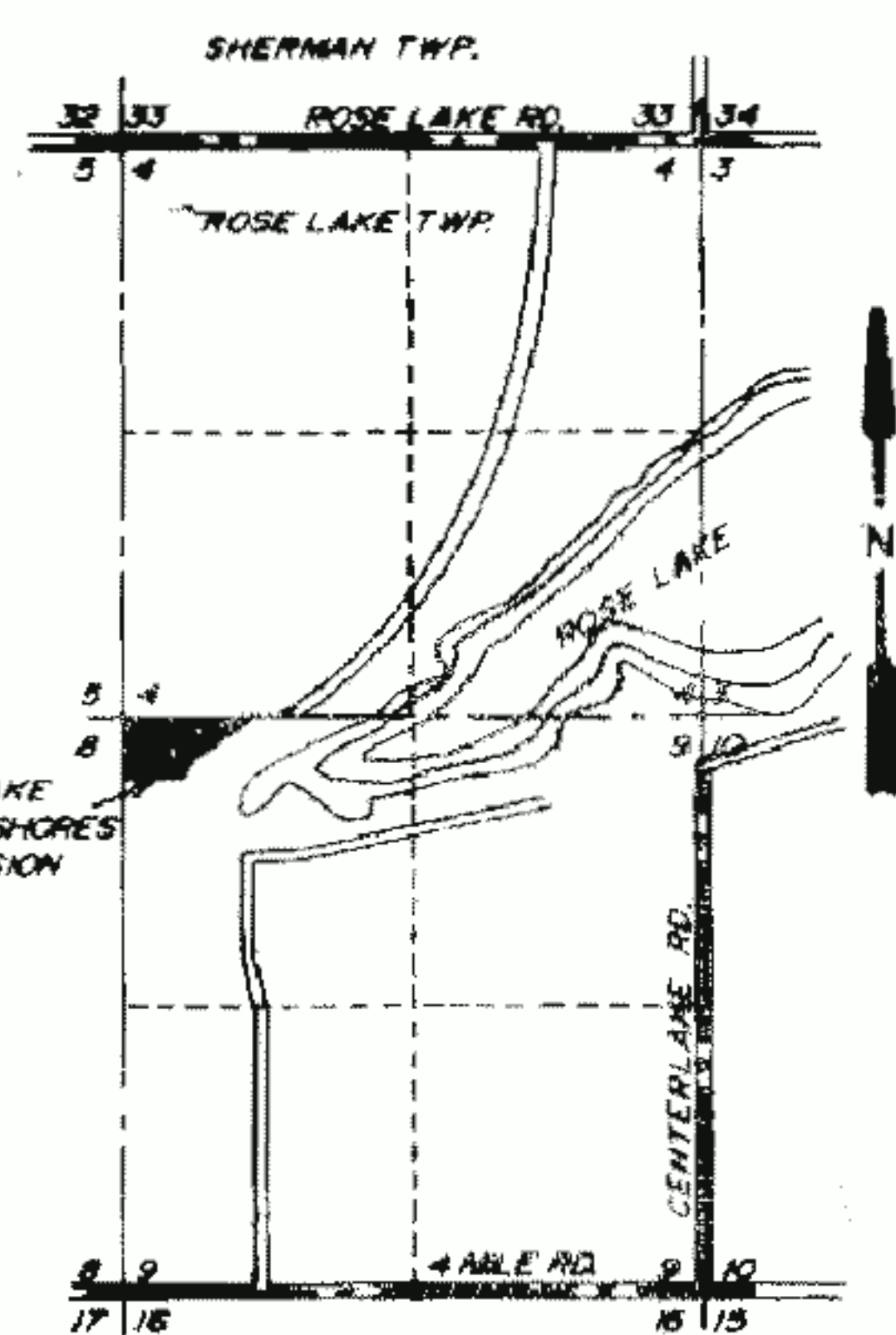
WEST SECTION LINE
NOV-19-29 W

ROSE LAKE HEIGHTS
(RECORDED IN LIBER 2
PAGE 86 - 860, OSCEOLA COUNTY)

WEST 1/4 COR., SEC. 9,
T19N, R9W

CURVE DATA
RAD = 288.22'
Δ = 17°-54'-20" TAN. = 35.15'

No.	Radius	Obs. Angle	Arc	Tan.	L.C.	L.C. Bearing
1	4419.54	02°-15'-54"	174.72	87.37	174.72	S 87°-48'-31" E
2	4353.54	07°-46'-13"	598.42	295.66	589.97	N 89°-30'-41" E
3	4419.54	04°-38'-42"	353.15	176.67	353.06	N 87°-54'-57" E
4	263.53	65°-07'-20"	299.52	168.28	283.66	S 61°-48'-44" E
5	329.53	65°-07'-20"	374.54	210.43	354.71	S 61°-48'-44" E
6	400.00	09°-18'-38"	65.00	32.57	65.00	S 65°-08'-51" W
7	334.00	15°-23'-30"	89.72	45.13	89.46	S 62°-06'-30" W
8	600.00	17°-48'-45"	186.53	94.02	185.78	S 63°-19'-28" W
9	666.00	17°-48'-45"	207.06	104.37	206.22	S 63°-19'-28" W
10	288.22	05°-21'-12"	26.93	13.47	26.92	N 73°-36'-25" W
11	222.22	36°-49'-52"	142.85	73.99	140.40	N 89°-21'-30" W
12	114.90	69°-26'-49"	139.27	79.63	130.90	N 36°-13'-19" W
13	180.90	69°-26'-49"	219.27	125.37	206.09	N 36°-13'-19" W
14	66.00	227°-01'-49"	261.52	—	122.88	N 73°-13'-37" E
15	288.22	17°-34'-24"	84.40	44.55	84.05	S 81°-01'-31" W



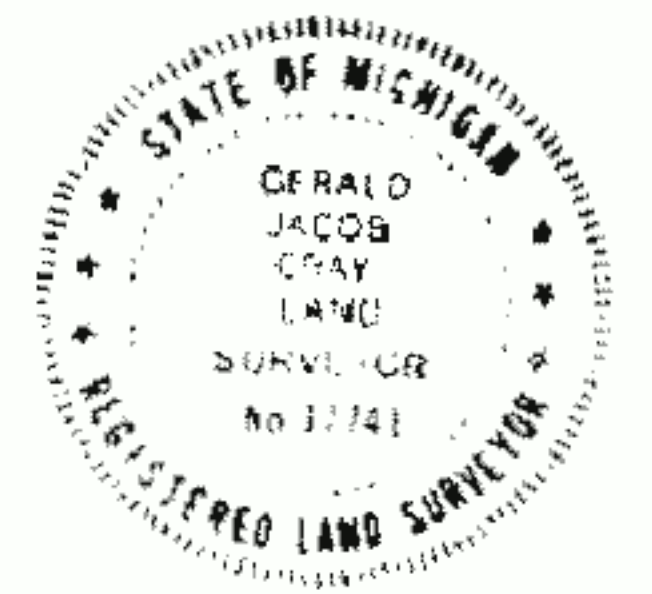
Certified true copy of Recorded plat

Allison Green

ALLISON GREEN
STATE TREASURER

By *Richard E. Lomax*
Richard E. Lomax, Plat Examiner

Date *April 13, 1976*



LEGEND

All dimensions are in feet.
All curvilinear dimensions are shown along the arc.
All lot corners are iron rods 18" in length and weighing no less than 0.6 lbs. per lineal foot.
Concrete monuments have been placed at all points marked "o".
The bearings of this plat were established in relation to true meridian by celestial observation of Polaris on January 15, 1971.

55090