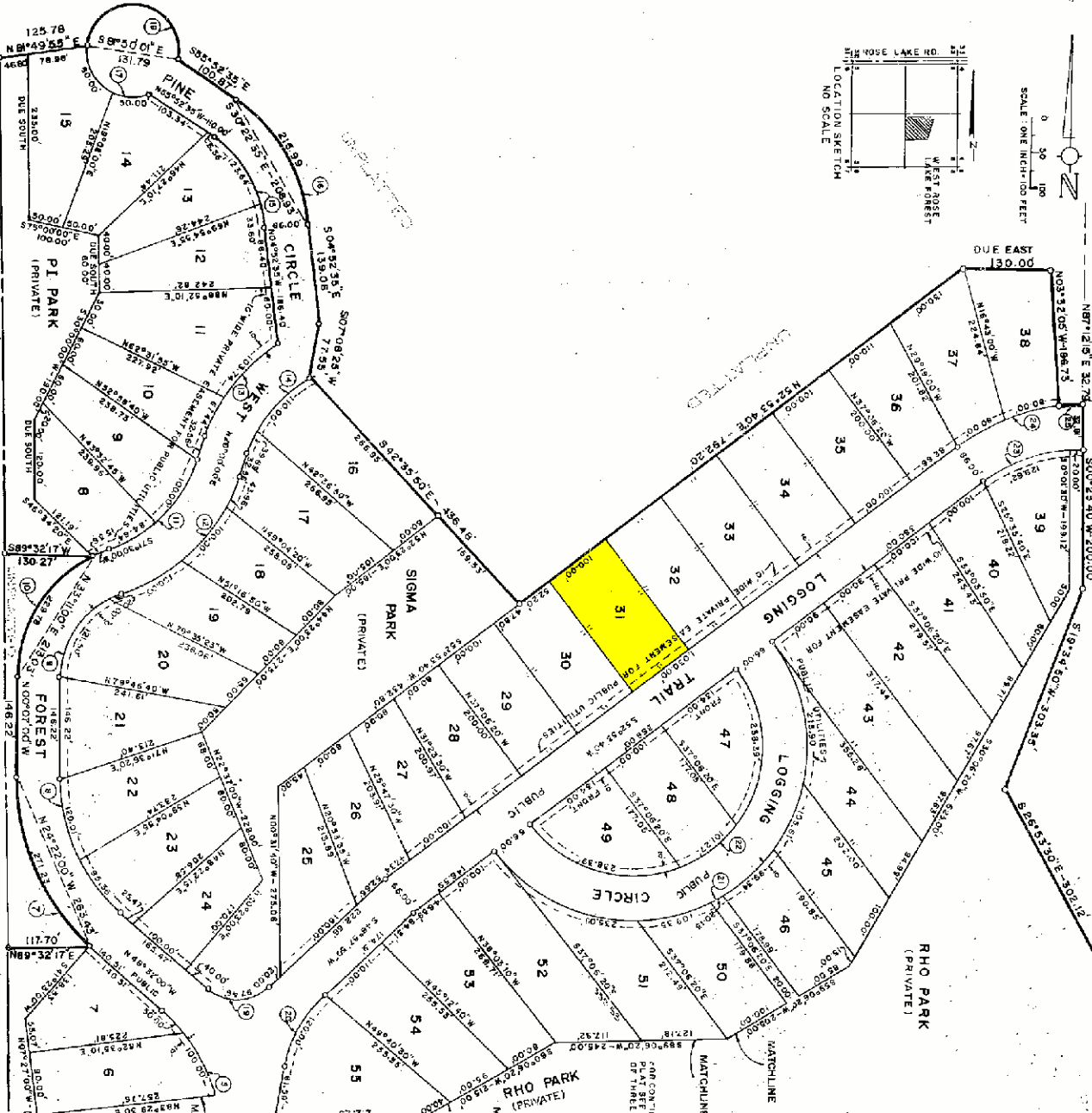
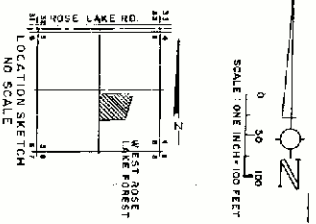


500°43'21"E
500°23'40"W-200'00"
N81°14'12"E-32.78' 68.02'
S80°03'00"W-193'12"
S19°34'50"W-302.35'
S26°53'30"E-302.12'

PLAT OF
WEST ROSE LAKE FOREST
PART OF THE EAST 1/2 OF SECTIONS 5, 19N, R9W, ROSE LAKE TWP, OSCOLA CO., MICHIGAN.



CURVE NO.	ARC	Δ	RADIUS	TANG.	BEARING	DISTANCE
0	289.33	181°00'	233.25	142.00	S19°32'00"E	246.22
1	271.23	148°30'00"	326.82	144.31	N82°32'30"W	253.22
2	215.38	148°30'00"	254.92	114.81	N62°28'30"W	208.99
3	141.00	76°30'00"	108.16	65.40	N33°11'00"E	131.18
4	228.77	136°30'00"	171.62	135.78	N43°39'00"E	213.02
5	184.04	51°50'00"	103.13	99.00	N45°42'00"E	178.49
6	171.18	35°12'33"	272.85	88.39	N45°42'00"E	235.23
7	149.63	40°20'00"	285.00	0	S82°53'40"W	113.67
8	375.24	150°00'00"	242.82	113.74	N30°22'33"W	208.93
9	126.00	127°31'46"	86.00	88.44	S18°52'18"E	120.98
10	215.26	189°00'00"	66.15	60.00	S89°10'20"W	81.88
11	97.46	184°23'10"	177.00	60.00	S89°10'20"W	81.88
12	784.51	160°00'00"	285.00	0	S82°53'40"W	113.67
13	149.63	40°20'00"	285.00	0	S82°53'40"W	113.67
14	149.63	40°20'00"	285.00	0	S82°53'40"W	113.67
15	149.63	40°20'00"	285.00	0	S82°53'40"W	113.67
16	215.26	189°00'00"	66.15	60.00	S89°10'20"W	81.88
17	126.00	127°31'46"	86.00	88.44	S18°52'18"E	120.98
18	215.26	189°00'00"	66.15	60.00	S89°10'20"W	81.88
19	97.46	184°23'10"	177.00	60.00	S89°10'20"W	81.88
20	784.51	160°00'00"	285.00	0	S82°53'40"W	113.67
21	149.63	40°20'00"	285.00	0	S82°53'40"W	113.67
22	149.63	40°20'00"	285.00	0	S82°53'40"W	113.67
23	149.63	40°20'00"	285.00	0	S82°53'40"W	113.67
24	149.63	40°20'00"	285.00	0	S82°53'40"W	113.67
25	32.01	08°52'30"	294.00	18.42	S89°12'00"W	32.78

FLAT LENSING

All dimensions are shown in feet.

All curvilinear dimensions are shown along the arc.

All lot markers are iron rods, 1 1/2" in length and weighing not less than 0.5 pounds per linear foot.

Concrete monuments have been placed at all points marked "C".

The bearings of this plat were established in relation to true meridian by direct observation of points on 1-15-1971.

This plat is subject to restrictions as required by act 386 of 1967, as amended on certain lots with respect to the requirements of the Michigan Department of Natural Resources and/or the Michigan Department of Public Health, which are recited in Law 310 of 1971 or records of this county.

54102