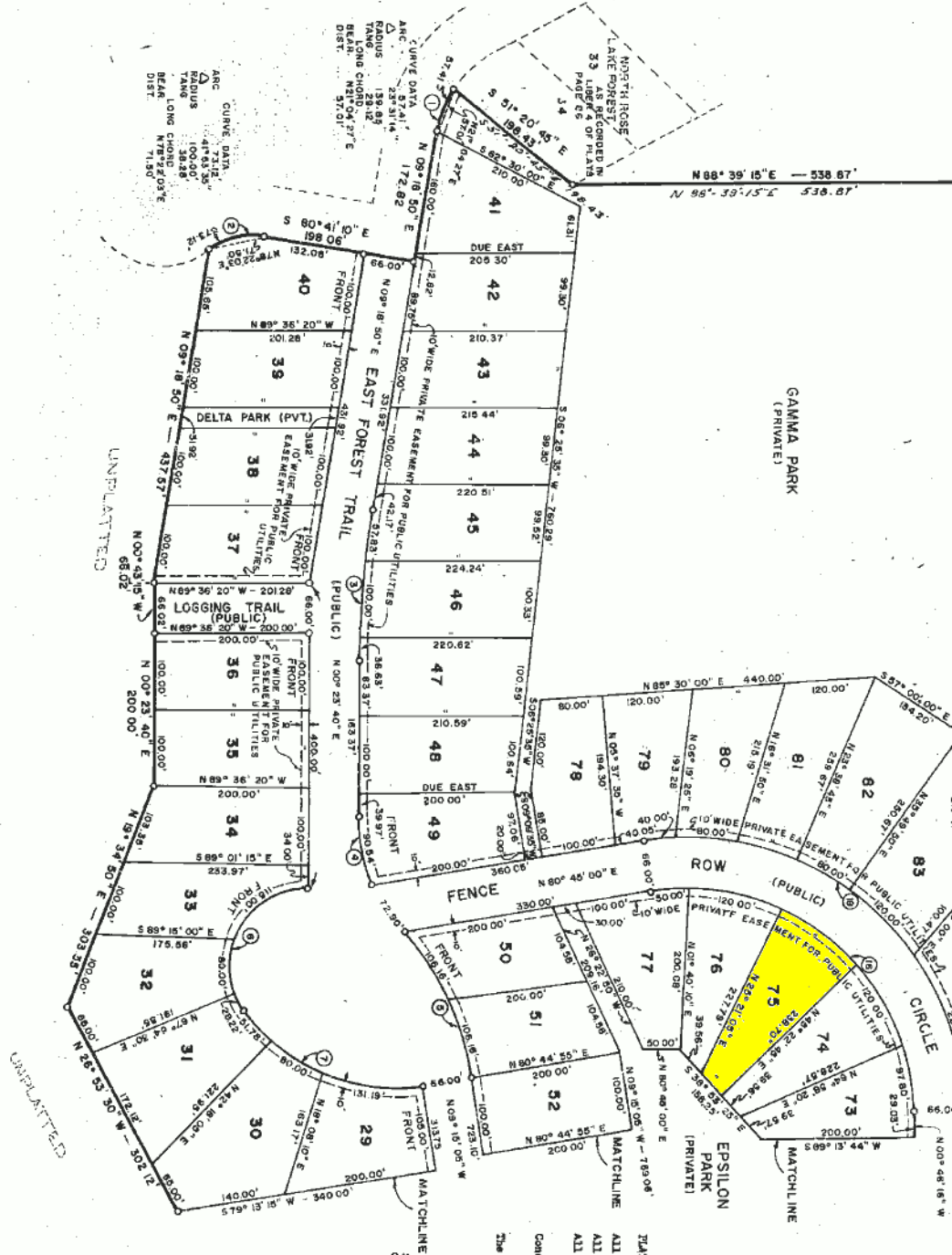
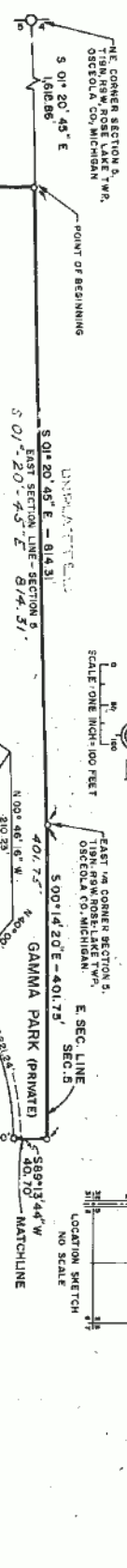


PLAT OF EAST ROSE LAKE FOREST PART OF THE EAST 1/2 OF SECTION 5, T19N, R9W, ROSE LAKE TWP., OSCEOLA CO., MICHIGAN.



CURVE NO.	ARC.	RADIUS	TANG.	BEARING	DISTANCE
1	57.41	25° 31' 14"	139.89	281.2	N 21° 04' 27" E 5701.1
2	57.41	41° 53' 35"	100.00	382.7	N 78° 22' 03" E 71.50
3	194.46	08° 45' 10"	1249.4	97.41	S 04° 51' 12" W 194.28
4	163.44	42° 54' 23"	213.28	85.97	S 21° 33' 30" E 103.47
5	202.32	34° 15' 40"	300.07	109.44	S 28° 22' 50" E 209.17
6	223.22	12° 17' 13.50"	100.00	204.53	S 28° 58' 56" W 179.08
7	522.97	04° 45' 05"	524.00	148.39	S 69° 22' 07" E 220.44
16	507.81	92° 28' 44"	253.44	342.73	N 07° 00' 00" W 447.28
18	521.24	98° 28' 44"	361.44	419.32	S 00° 00' 00" E 547.28

BEARING
All dimensions are shown in feet.
All curvilinear dimensions are shown along the arc.
All lot numbers are 1/2000, 1/8" in length and weighing not less than 0.6 pounds per linear foot.
Concrete monuments have been placed at all points marked thus "O".
The bearings of this plat were established in relation to true meridian by celestial observation of Polaris on 1-15-1971.

PLAT LEGEND
All dimensions are shown in feet.
All curvilinear dimensions are shown along the arc.
All lot numbers are 1/2000, 1/8" in length and weighing not less than 0.6 pounds per linear foot.
Concrete monuments have been placed at all points marked thus "O".
The bearings of this plat were established in relation to true meridian by celestial observation of Polaris on 1-15-1971.

SEE SHEET TWO OF THREE FOR CONTINUATION OF PLAT

This plat is subject to restrictions as required by Act 289 of 1967, as amended, on certain lots with respect to the requirements of the Michigan Department of Natural Resources and/or the Michigan Department of Public Health, which are recorded in file 310, Page 484 or records of this county.