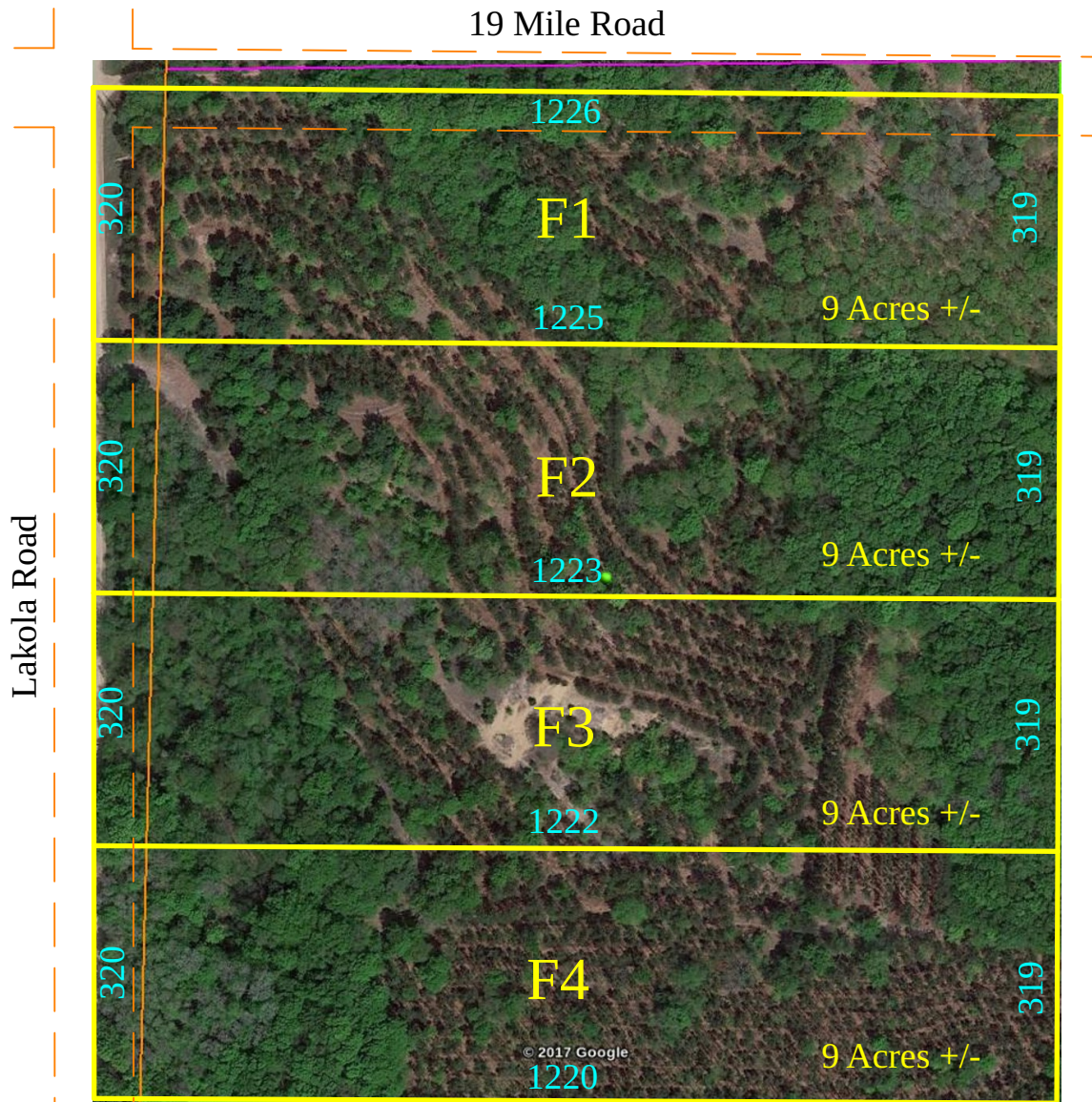


31-T20N-R10W, Osceola County, Michigan



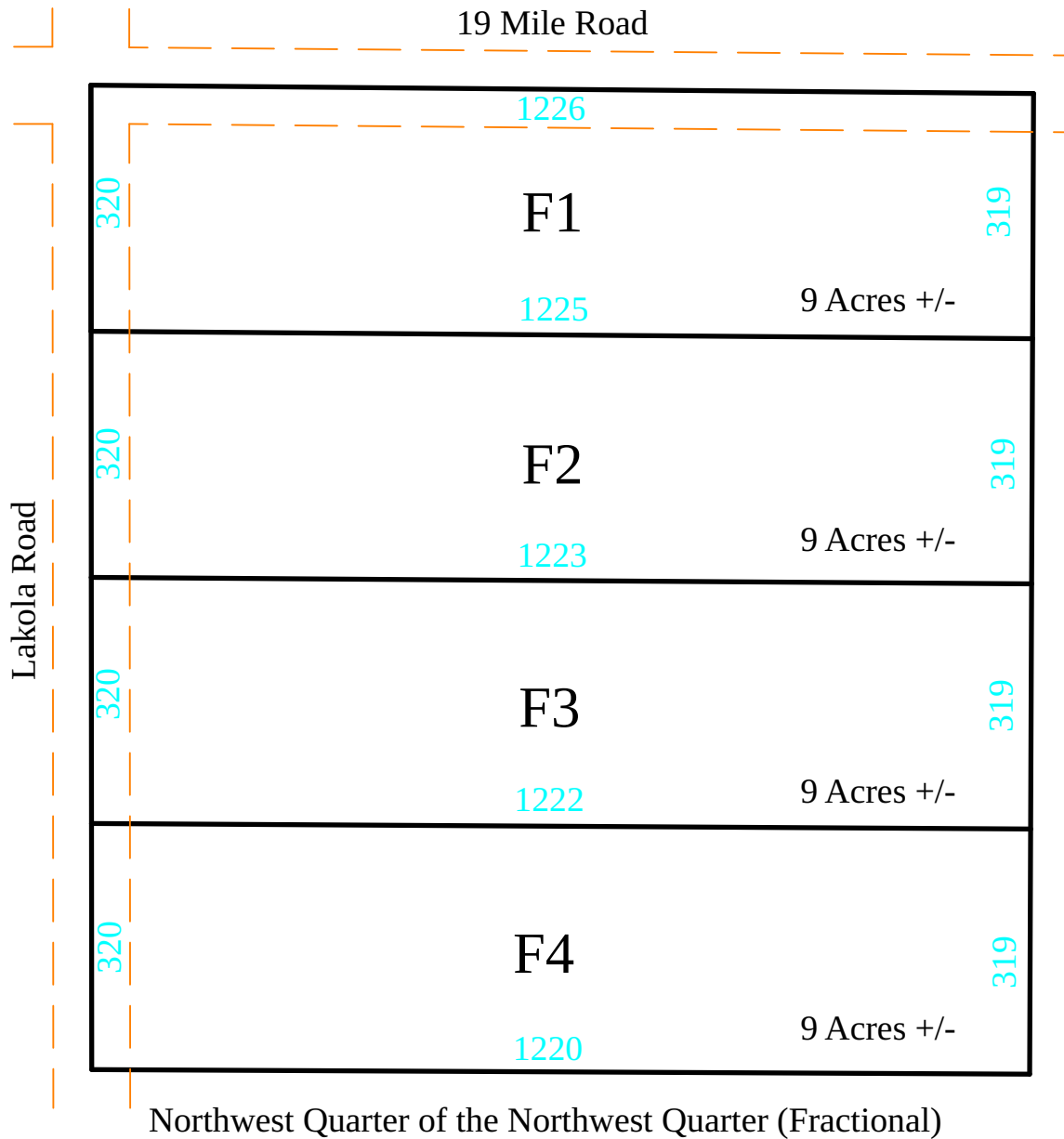
Northwest Quarter of the Northwest Quarter (Fractional)

Prepared for: www.nwmichiganland.com
By: Gregory Wood
Email: greg@nwmichiganland.com
Phone: 931-452-4511 or 931-638-4182 (cell)
Effective date: 07/21/2017

Dimensions are approximate



31-T20N-R10W, Osceola County, Michigan



Prepared for: www.nwmichiganland.com
By: Gregory Wood
Email: greg@nwmichiganland.com
Phone: 931-452-4511 or 931-638-4182 (cell)
Effective date: 07/21/2017

Dimensions are approximate

